



**Acme Sanitary Ware Co. Ltd.**

1/F, Acme Building, 22-28 Nanking Street, Kowloon, Hong Kong  
Tel: 2388 7171 Fax: 2710 8012  
Email: acme@acmesanitary.com.hk  
Website: www.acmesanitary.com.hk



Pure Freude  
an Wasser

PROJECT		REF		REV	ITEM CODE	
LOCATION		DATE			PAGE	

## SANITARY WARE SPECIFICATION SHEET

Item Descriptions	GROHE (Germany) "Plus" Single-lever basin mixer S-Size with push-open pop-up waste set; nominated flow rate <b>5.1 L/min</b> in <b>WELS Grade 2</b> ; Registration No. TM 22-0017	Illustration/ Drawing
Dimensions	L111 x W51 x H208 mm	
Model	33163003	
Finish	Chrome Plated	
Country of origin	Germany	
Manufacturer	GROHE Limited	
Supplier	Acme Sanitary Ware Co. Ltd Mr. Eric Wong/ Mr. Don Yuen	
Contact Tel/Fax	(852) 2388-7171 / (852) 2710-8012	
E-mail	acme@acmesanitary.com.hk	
Website	www.acmesanitary.com.hk	
<p><b>"Plus"</b> <b>Single-lever basin mixer S-Size</b></p> <ul style="list-style-type: none"> <li>single hole installation</li> <li>metal lever</li> <li><b>GROHE SilkMove</b> 28 mm ceramic cartridge</li> <li>with temperature limiter</li> <li><b>GROHE StarLight</b> chrome finish</li> <li><b>GROHE EcoJoy</b> SpeedClean mousseur 5.7 l/min</li> <li><b>GROHE AquaGuide</b> adjustable mousseur</li> <li><b>GROHE QuickFix Plus</b> installation system</li> <li>smooth body with push-open pop-up waste set 1 1/4"</li> <li>flexible connection hoses</li> </ul>		 <p><b>Colour options:</b></p> <ul style="list-style-type: none"> <li>003   StarLight Chrome</li> <li>DC3   SuperSteel</li> <li>AL3   Brushed Hard Graphite</li> </ul>
 <p>33163DC3      33163AL3</p>		

Note:  YouTube <sup>HK</sup> (33163003 unboxing) <https://www.youtube.com/watch?v=0WNV1IhumMk>

\* All information of the above is for the reference only. No prior notice is made if any changes.



PROJECT		REF		REV	ITEM CODE	
LOCATION		DATE			PAGE	

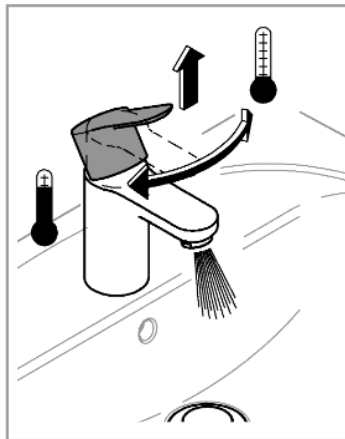
## SANITARY WARE SPECIFICATION SHEET

### GROHE PLUS

#### ACCURACY THAT GOES BEYOND DESIGN

Imagine a bathroom that offers not just sleek, cutting-edge, bold design design, but also confidence and control. Where you can tell water temperature at a glance and switch water flow with just a swipe of your hand. A room where nothing is left to chance, where form delivers function in a sleek, tactile package. With the new GROHE Plus you can make it a reality.

This innovative range puts control and convenience in your hands, delivering accurate temperature information at a glance. The GROHE Plus range includes some faucets with a temperature display, so you know the water will always be just the right temperature. GROHE Plus also offers a new level of ergonomic comfort and practical function too, presented in a silhouette of architectural strength and elegance, with surfaces so sleek they invite interaction.



#### The push-open pop-up waste – fingertip operation

Elegance and simplicity – the push-open pop-up waste is opened and closed with an effortless push



#### GROHE EcoJoy with water-saving function for reduced consumption

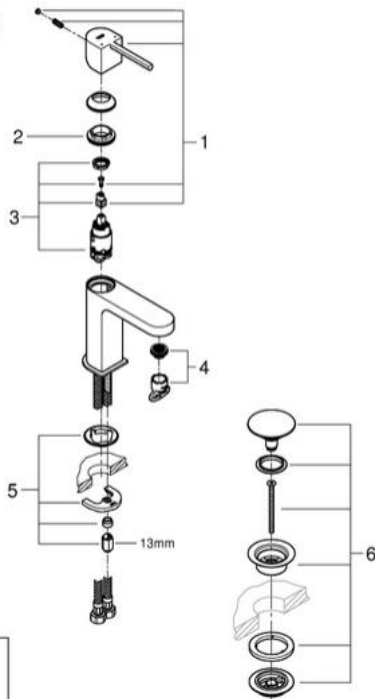
GROHE EcoJoy reduces water consumption by up to 50% without compromising on performance. Whenever you turn on your tap, you will enjoy a full jet of water while saving money nonetheless.



#### GROHE QuickFix Plus – quick and easy installation in a few simple steps

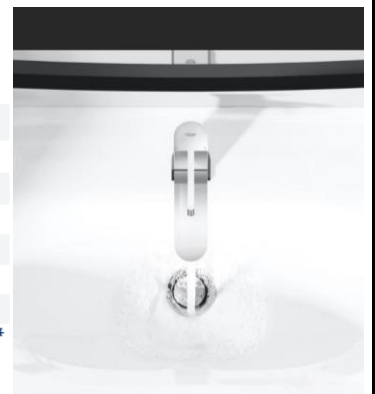
Save time on the installation of your tap with GROHE QuickFix Plus. Consisting of fewer parts, our new system makes the installation process quicker and easier than ever.

#### SPARE PART:



Pos.-nr.	Prod. Description	Order-nr.
1	lever	48452000
2	Fitting ring	07419000
3	Cartridge	46580000
4	flow control adjust	48449000
5	Shank fastening assembly	46645000
6	Pop-up waste set	65807000
7	Mounting wrench	19017000*

\* Optional accessories



Note:

\* All information of the above is for the reference only. No prior notice is made if any changes.



自願參與用水效益標籤計劃 - 水龍頭  
Voluntary Water Efficiency Labelling Scheme - Water Taps



註冊證書

茲證明

This is to certify that

將下列水龍頭在本計劃內註冊：  
has registered the following water tap under this scheme :

牌 子 / Brand	:	Grohe
型 號 / Model	:	33163XX3 + 412002040
種 類 / Type	:	Mixing
原產地 / Country or Region Origin	:	Germany (Mixer & Flow Controller)

XX – denote the code of colour

在用水效益標籤上展示的標誌

*Symbolic Presentation on the Water Efficiency Label*

:



滴水點

*Water droplet(s)*

用水效益級別

*Water Efficiency Grade*

:

2

耗水量

*Water Consumption*

:

5.1

公升/分鐘

*litres/minute*

簽發日期：  
Date of Issue:

17 January 2022



水務署

Water Supplies Department



水務署署長(尤孝賢代行)  
for Director of Water Supplies





水務署  
Water Supplies Department

總部 Headquarters

香港灣仔告士打道七號入境事務大樓 48 樓

7 Gloucester Road, Wan Chai, Hong Kong



本署檔號  
Our ref.  
來函檔號  
Your ref.

/2020 T/J(418/2020)

電話 :  
Tel.  
傳真 : 2824 0578  
Fax.

25 May 2020



Approval of "GROHE" Basin Mixer  
(General Acceptance No. C20200364)

Your letter ref. WRC/2178 dated 21 April 2020 refers.

Having considered the test report ref. J24737A issued on 22 October 2019 by Nutek Systems (HK) Ltd., this Authority accepts that the fitting described below complies with, and its use when correctly installed does not contravene, the Waterworks Ordinance and Regulations.

**Name of Manufacturer:** Grohe AG

**Country of Origin:** Germany

**Brand:** Grohe

**Details of Fitting:** 3/8" Single lever basin mixer

**Model:** 33163XX3  
(where the digits "XX" denote the code of colour)

**Body Markings:** **GROHE**  


**Expiry Date:** 16 September 2024



This Authority hereby permits the use of the above fitting in fresh water plumbing systems subject to full adherence to Waterworks installation requirements. In particular, you are required to draw your customers' attention to the following requirement-

"The cold water supply to the fitting shall be drawn from the same source that supplies the hot water apparatus so as to provide a balanced pressure and to obviate the risk of scalding in the event of a restriction or failure in the water supply."

A condition of this acceptance is that the fitting to be installed shall be replicas of the sample as certified by the testing agent mentioned above and without modifications. This acceptance may be withdrawn at any time if the standard of the fitting installed fails to meet that of the approved sample or if the fitting is found to be unsuitable for use in fresh water plumbing systems.

This acceptance is only applicable to the main body of the fitting, unless otherwise specified.

For the use of the fitting in any project, the General Acceptance Number of this letter must be quoted as a means of identification of acceptance of the fitting by this Authority.

Should you have any enquiries, please contact our Engineer Mr. Terry KUNG at tel. no. 3583 4086.

Yours faithfully,



(CHAN Chung-kun)

for Director of Water Supplies

Encl.

c.c.      WSD 3321/1/82    ] - without catalogue  
            ME/MC            ] - with soft copy only